

Discover Eastbourne Seafront

2025 GUIDE

FREE - PLEASE TAKE A COPY!



Contents

- 3 Welcome
- 4 History of Eastbourne Seafront
- 6 Holywell Retreat
- 8 Wish Tower Area
- 10 Wish Tower to Bandstand
- 12 Bandstand to Pier
- 14 Victoria Place
- 16 Pier to Redoubt Fortress
- 18 Redoubt Fortress to Fishermen's Green
- 20 Fishermen's Green to Langney Point
- 22 Langney Point to The Harbour
- 24 Seafront Events
- 26 Entertainment
- 28 Transport
- 30 Dogs on the Seafront
- 33 Seafront Facilities Information
- 35 Seafront Emergency Information
- 37 Eastbourne Seafront Community Groups
- 52 Seafront Map
- 54 Town Centre Map
- 55 Volunteer Information

Welcome



Friends of Eastbourne Seafront are a not for profit organisation, campaigning, working proactively and fundraising to restore and improve Eastbourne seafront. Working positively with Eastbourne Borough Council, local businesses, volunteers and local groups to develop a sense of community pride and make a difference to our seafront.

Collaborating with Eastbourne Borough Council, local businesses, and seafront community groups, our aim is to ensure our seafront remains appealing, affordable and accessible to everyone of all ages, both residents and visitors. Our mission involves fostering community engagement and reinstating a sense of community pride.

Eastbourne seafront boasts a magnificent 4.1-mile promenade extending from Holywell at the western end to the Harbour at the east. The terrain is mainly flat, making it suitable for wheelchairs and mobility scooters, except for the last stretch from Langney Point and the Harbour where it turns to beach. No bikes are allowed on the promenades between The Redoubt and Holywell for a safe environment for pedestrians.

This booklet highlights attractions along the entire seafront revealing unique characteristics, diverse attractions and secret delights.

Our Welcome Team members are stationed from the Pier to Western Lawns. Identifiable by their polo shirts and turquoise jackets with our logo, and are there to answer questions, provide directions and offer up-to-date information.

For further information on how to volunteer or become a member of the Friends of Eastbourne Seafront, visit our website at:

www.friendsofseastbourne.org.uk



History of Eastbourne Seafront

Two hundred years ago, Eastbourne was just starting to be recognised as a resort. The children of George III spent their holidays here; and that made it rather fashionable. But it was not until 1850 and the arrival of the railway that any real change took place. The Duke of Devonshire was a major landowner and decided to make a large investment in building a resort for the upper classes.

A first step was to build the Grand Parade, flanked by the two-tier promenades between the pier and the Wish Tower. The chalk cliffs originally extended from there to Holywell and were transformed into the various levels we see today by the picks and shovels of 300 labourers.

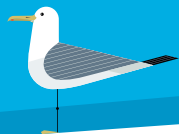
Walking along the promenade we may not realise that it is the top of a 5m deep sea wall. It stops the chalk cliffs from being eroded and the area east of the pier from being flooded.

To keep a high tone, the Duke banned shops or arcades along the seafront. Fun was hard to find until the inter-war years when an explosion of activity saw a major addition to the pier, a new bandstand and various gardens at Holywell.

If you want to find out more about the Seafront's history, watch this talk: www.youtube.com/watch?v=G3nULswgAcE



Holywell Retreat



1

Holywell Retreat is situated about 30 minutes to the west of the pier, combining natural beauty with recreational amenities, plus toilets.

Upper and Lower Promenades

There are two promenades to stroll along to this part of the seafront, with plenty of benches to stop and enjoy the views. The Lower Prom is adjacent to beaches, with thatched shelters along the route. There are some brick beach huts, with number 2 once used by King George V and Queen Mary. The Upper Prom, shaded by trees, has a Mediterranean feel on sunny days, with glimpses of the sea through the foliage.



Beaches and Holywell Ledge

The beaches along this stretch tend to be less crowded and what is known as Holywell Ledge has a wealth of rock pools to explore at low tide.

Holywell Tea Chalet

Adjacent to the beach is Holywell Tea Chalet, which is in a delightful spot to enjoy refreshments while taking in the coastal scenery. Dogs are welcome outside.



Italian Gardens

Climb the steep path next to Holywell Tea Chalet to find the Italian Gardens. Created by landscaping an old chalk quarry, and later redesigned in the Italianate style, these secluded gardens offer a shaded, serene retreat, perfect for a picnic! Additionally, the gardens serve as a fantastic location for summer open-air theatre.

The Helen Garden

At the top of the slope on King Edwards Drive, these landscaped gardens offer lovely views, a children's play area, public bowling green, petanque, and an 18-hole putting green (May to September). In the thatched pavilion, Cadence café serves refreshments and is open all year round. There are also toilet facilities here.

All Saints Park

This park is a lovely peaceful spot over the road and is part of the All Saints residential complex, comprising stunning neogothic buildings, including the beautiful All Saints Chapel.



South Downs Way and Weald Way

At the end of King Edwards Drive, South Downs Way and Weald Way begin. Climb to the top of the hill for a stunning panoramic view of Eastbourne. There are several paths that lead to Cow Gap and up to Beachy Head.

Kiosk Café

The Kiosk Café is at the bottom of the hill by Bede's School, offering delicious food and snacks as a rewarding treat.

Holy Well and Sugar Loaf

Discover these hidden gems by taking the path between The Helen Garden and Bede's School. Go past a colourful wildlife mural and past the locally known Sugar Loaf, and descend the steps to find the Holy Well, a natural spring, only visible after lots of rain.



Wish Tower Area

2

This particular stretch of the seafront is home to the **Wish Tower** and the **Western Lawns**.

Western Lawns

The Western Lawns provide a sprawling green expanse overlooking the sea, creating a picturesque setting for various recreational activities and events. Throughout the year, the lawns host a variety of events, many free of charge, creating a lively atmosphere for both residents and visitors alike. Events range from Magnificent Motors, to the Beer Festival and Airbourne. The gardens along the promenade are tended by our volunteer **Gardening Team**.

The Grand Hotel

Across the road from the Western Lawns is the world famous Grand Hotel, affectionately known as The White Palace. Built in 1875, so celebrating its 150th anniversary this year, this luxurious 5 star hotel has often been used as a location for films and TV. Guests have included Winston Churchill and Charlie Chaplin, Debussy even completed his La Mer symphony there looking out at the English Channel.

Bistrot Pierre

Situated in a beautiful spot with views of the sea and Beachy Head, Bistrot Pierre is all about the scenery and tasty French-inspired eats. This is the place to be for some seriously delicious food with a view. Dogs are welcome on the terrace outside.



Wish Tower

The Martello Tower, known as the Wish Tower, was constructed as a defence against Napoleon. Out of the 103 Martello Towers built, it is one of the remaining 43 and one of only two in public ownership. The Tower is now looked after by the Wish Tower Friends, a group of local enthusiasts. During the Summer, when the flag is flying, the Tower is open for visitors who can enjoy glorious views of Eastbourne and beyond from the roof.

For more information visit www.wishtower.org.uk

Peace Garden

Around the Wish Tower is The Peace Garden, which was officially opened in July 2018, and is looked after by volunteers from the Friends of Meads Parks and Gardens. It was redesigned from the moat around the tower in memory of the 180 civilians who lost their lives when the town was bombed in WW2. The original memorial was The Sun Lounge and Café which was built in 1961, funded by The Foyle family. This has since been replaced by the restaurant Bistrot Pierre.



Wish Tower to Bandstand



3

A busy part of Eastbourne seafront.

Bourne to Kayak

For the more adventurous, you can rent kayaks and stand up paddle boards here.

Eastbourne RNLI Museum and shop

At the bottom of the Wish Tower slope, is Eastbourne Lifeboat Museum, run by volunteers. Exhibits showcase Eastbourne's lifeboating history, featuring medal-winning rescues and Operation Dynamo at Dunkirk. Plus there's an RNLI gift shop with plenty of souvenirs to purchase. The flower beds outside are cared for and maintained by the Friends of Eastbourne Seafront volunteer Gardening Team.

Beach Shack Café

Next door to the museum is The Beach Shack, a café serving snacks and refreshments with seating inside and benches outside.

Life Guard Station

Near to the Lifeboat Museum, you will find The Lifeguard Station, located by the most popular stretch of beaches. Life guards patrol the beaches from 1st May to 30th September and provide first aid services, information about the weather, wind speed, tide times and safe swimming. Free Kidsafe wristbands are available to assist in reuniting any lost children with parents. There is a shower on the beach to rinse off after swimming in the sea.

Luna Hut Sauna

Next to the Lifeguard station, and new to the seafront, you can discover the rejuvenating benefits of a warming sauna followed by a refreshing dip in the sea or in the plunge pools. It is open all year round.

Cafes & Kiosks

Up to the pier, the promenade divides into a lower and upper promenade. Both are dotted with a variety of kiosks and cafes, offering a range of options to take a break, enjoy something to eat or drink, or indulge in a delicious ice cream!



Devonshire Quarter and Tourist Information Centre

Head through Wilmington Square, or along Carlisle Road with its many restaurants to what is known as The Devonshire Quarter. The Welcome Building is a short walk from the seafront and is a hub for local and tourist information. You will also find the Congress Theatre, offering a varied programme of entertainment and the Winter Gardens. The Towner Art Gallery is the largest purpose-built gallery in the South-East with a changing programme of exhibitions, a cinema, a cafe and a restaurant.

Eastbourne Bandstand

With its picturesque setting right beside the sea, Eastbourne Bandstand provides a unique stage for a range of performances. Said to be the busiest bandstand in the UK, it attracts visitors with its diverse entertainment line-up. This iconic venue hosts a variety of acts, such as vibrant tribute bands, traditional Brass and Silver Bands and lively children's discos, from spring to early Autumn. The Bandstand flower beds are planted and maintained by our volunteer Gardening Team.

Seafront Office

Situated on the lower prom, east of The Bandstand. Purchase tickets for Bandstand concerts, plus it has plenty of information about Eastbourne. Opening times: April - October, every day 10-5pm, later on performance nights. November - March, Mon - Fri 10-4pm.



Bandstand to Pier



4

Continuing along the seafront from Eastbourne Bandstand, we reach the iconic Eastbourne Pier.

Seafront Market

During the spring and summer months, the upper promenade often hosts a vibrant seafront market, offering an array of food and items. Details of dates are on the Visit Eastbourne website.

Beach Café

Located along the lower prom, right on the beach, the Beach Café is a great spot to enjoy refreshments with uninterrupted views of the sea.

Starling Murmurations

During the winter, starling murmurations perform stunning displays over the pier and sea at sunset.

Carpet Gardens

Eastbourne's renowned Carpet Gardens take pride of place along the seafront, located by the pier. The gardens have beautifully maintained flower bed displays.

Gardening Team

Along the seafront, you may spot our **Gardening Team**, volunteers who give their time to maintain and care for beds and borders along the seafront.

If you would like to join, please look on the Friends of Eastbourne Seafront website or contact: gaynor@friendsofeastbourneseafront.org.uk



Eastbourne Pier

Eastbourne Pier stands as an iconic seaside landmark stretching out into the English Channel. This Victorian-era pier opened in 1872 and is one of the best examples of a pier from this period. It's a popular place for visitors and locals who enjoy strolling along the pier enjoying panoramic views of the English Channel, seafront and coastline.

The pier has a variety of food outlets - The Chippy selling traditional fish and chips, The Hatch serving ice cream and other sweet treats, Good Taste for Asian food, the Victorian Tea Rooms, the pub Drop in The Ocean which regularly hosts live music at weekends. There is also amusement arcades, shops selling a variety of gifts and sweets and Orb glow in the dark mini golf.



Victoria Place



5

Between the Bandstand and the Pier is Victoria Place which leads to the town centre.

Looking for the perfect spot to eat, drink, and shop by the sea? Victoria Place at the seafront end of Terminus Road is your go-to destination! This vibrant street blends the charm of independent shops with classic seaside retailers, all set against a backdrop of bustling cafés, delis, and restaurants ready to take your taste buds on a global adventure.

Exciting changes are coming! Thanks to funding from the Government's Levelling Up Fund, Victoria Place is being transformed into a stunning, pedestrian-friendly hotspot. Imagine al fresco dining with fresh sea air, stylish new paving, elegant street furniture, and lush greenery enhancing the atmosphere.

All businesses remain open throughout the improvements. So come and experience the energy of Victoria Place today—where great food, unique shopping, and seaside charm come together like never before.



Pier to Redoubt Fortress



6

This next stretch takes us from the pier to the Redoubt Fortress where the seafront narrows to one promenade.

The Beach & Gift Shop, All Decked Out Beach Cafe & Public Toilets

Next to the pier is a gift shop with everything you may need for the beach, as well as a great range of souvenirs. Next to it is a food stall selling ice cream and traditional seafood.

Beach Huts

On the beach past the pier are two unusual structures. Originally conceived as Beach Huts following an international architectural competition organised by Eastbourne Borough Council in 2016. Out of the five winning designs, only two were built: Spyglass (inspired by binoculars), now called Memories by the Sea which serves food, drinks and ice cream; and What Unearthed? (inspired by a tooth).

Gelato Famosa

Opposite the beach huts is Gelato Famosa, a popular ice cream parlour known for its incredible array of artisanal gelato flavours. It has indoor and outdoor seating.

Pavilion Gardens & Glass House

A lovely spot with views of the pier, these gardens were originally the site of a bandstand from the 1930's which has now gone. Callisthenics equipment are in the gardens and free to use. Look out for a memorial stone, dedicated to The Royal Sussex Regiment and those who fought and died in the Burma Campaign of WW2. You will find Glass House, serving food, snacks and drinks with seating inside and out.



Redoubt Fortress

One of the South Coast's most historic landmarks, The Redoubt Fortress is a military structure that echoes the town's maritime past. Constructed during the early 1800's as part of Britain's coastal defence system, the fortress served various military purposes during the 19th and 20th centuries.

After its military purpose ended, The Redoubt was used in numerous ways throughout the years. Previous attractions included a mini village, an aquarium, a cinema and a military museum.

As of now, The Redoubt Fortress is closed to the public. This closure is due to the urgent need for repairs and restoration to this piece of military history. The colonnades which were originally built as part of the bandstand complex have been recently demolished as they were unsafe.

The Friends of Eastbourne Seafront are campaigning for this fascinating building to open once again.



Redoubt Fortress to Fisherman's Green



7

This section is a vibrant part of the seafront with fishing, sailing and sports taking place along here.

The Beach Studio and Splash Point Café

On the corner at Splash Point is Natural Fitness and Therapies at The Beach Studio for fitness classes and holistic therapies. The building also houses Splash Point Café with glorious views out to sea. Reward yourself post workout (or post walk!) with some delicious refreshments.

In the Splash Point garden there is a boat filled with flowers which has been renovated and is cared for by Friends of Eastbourne Seafront.

Parade Bowling Club

This bowling green is open to the public and welcomes new members.

Treasure Island

Treasure Island is a popular pirate themed family adventure park with an indoor soft play, an outdoor play area with a paddling lagoon, an eighteen-hole adventure golf course and a café.

The Beach Deck

The Beach Deck, a fabulous restaurant along the prom, provides glorious sea views, it is a perfect spot to enjoy delicious meals, your favourite drink or a delightful slice of cake. Dogs are also welcome.

Sailing and Fishing Clubs, Cadet Groups

Eastbourne Sovereign Sailing Club, Eastbourne Angling Club (offering club membership without fishing rights for those interested in facility access), Sea Cadets, and behind them, The Fishermen's Club, a social club with open membership for the public. Also, Eastbourne Rowing Club is on the beach.

Fisherman's Green

The car parks, boat houses and sports courts in this area are known as Fisherman's Green, once a grassy area used by fishermen and their families. The newly renovated tennis and basketball courts (also used for roller skating) are free. Book online at www.clubspark.lta.org.uk/FishermansGreenTennis Nascafé, is a small café next to the tennis courts which serves hot food, drinks and ice cream, has outside seating, and dogs are welcome.

Fish!

Right on the beach, Southern Head is a family owned fish shop selling a wide variety of fresh fish and shellfish, there is also a butcher's shop. The Fish and Crab Shack also has a selection of fresh fish, plus snacks, including tasty fish sandwiches, hot food and drinks.

Eastbourne Lifeboat Station

The main lifeboat station is now located at Sovereign Harbour, but a smaller boat is still launched from here.

Allchorn Maritime

The Allchorn pleasure boats were once a major tourist attraction on Eastbourne seafront. A team of volunteers at Allchorn Maritime has taken on the task of restoring these former pleasure boats along with an old RNLI boat. The shed is open to the public on Mondays to view these boats as well as old photos and other maritime exhibits. www.allchornmaritime.org.uk



Fisherman's Green to Langney Point



8

This part of the seafront is the place to be for water sports and skating activities!

Buzz Active Watersports

Providing affordable water sports for ages 6+. Choose from sailing, windsurfing, powerboating, and paddle boarding.

Princes Park

Across the road, Princes Park has gardens, a boating lake, two children's play areas, and a bowling green.

The Perch Café overlooking the lake is open every day serving a range of delicious food and drinks, and serve an all day brunch. The park also hosts events in the summer months, including a circus and Eastbourne Pride.

Princes Park Mini Golf and Café

Enjoy a fun round of mini golf and finish off with refreshments at the café after your game.

Fort Fun

After the colourful beach huts you come to Fort Fun, now a Wild West themed indoor play area for younger children with a cafe.

Sovereign Centre

A leisure centre with a range of facilities including a 25 metre gala swimming pool and training pool. There are swimming lessons, gymnastics lessons, sauna and steam room, a workout studio with classes, the sports hall is available to hire and there is a café.



Children's Cycle Track

In June 2023 Friends of Eastbourne Seafront with funding from the John Jackson Charitable Trust, opened a children's cycle track on the seafront, close to the skatepark. It is popular with children of all ages, and is ideal for balance bikes, scooters and bikes. There are benches and picnic tables built by our volunteers for use in the spring/summer months.

Sovereign Skate Park

A purpose built skate park for skating, BMX and scooter activities.

Sovereign Park, Prince William Parade

This Park preserves some of the shingle beach habitat. There is a picnic site with tables located behind the skatepark.

Sovereign Water Works

At the end of the promenade is the Sovereign Water Works which is shaped like a giant sandcastle.



Scooter Photo: TK photography - follow on Facebook & Instagram

Langney Point to The Harbour



9

The eastern end of the seafront. The paved prom ends just beyond The Water Works with the final stretch on shingle to Sovereign Harbour.

Access to Sovereign Harbour

To get to the harbour you have to walk over shingle for a few hundred metres before joining the outer harbour path. For those less able to walk over shingle or for buggies, you can cut the corner by walking through the residential area before joining the outer harbour path.



Martello Tower No.66

This Martello tower is a short walk over the beach near the harbour entrance.

Sovereign Harbour

Sovereign Harbour is the largest composite marina in Northern Europe. There are plenty of walkways to explore the five harbours with stunning yachts moored, abundant wildlife, including resident seals, plus you can also walk along the beach.

The Waterfront has a wide variety of bars and restaurants. On a sunny day, it's a great place to sit and enjoy the view with a drink and something to eat.

Boat Trips

Enjoy the harbour via Harbour Boat Trips which explore the inner waterways. Also operating are boat trip operators and boat charters running from the harbour taking trips to Beachy Head Lighthouse and more. Kraken Rib Tours, offer a more thrilling, fast paced ride along the coast around Beachy Head Lighthouse and The Seven Sisters.

Sovereign Harbour Retail Park

Just round the corner from the harbour, you'll find an out of town retail park with large stores like Next, Boots, Sports Direct, Matalan, TK Maxx, Smyths Toys, Mountain Warehouse, B&M, a big Asda supermarket, plus a gym.



Seafront Events



For the latest information, including any cancellations or additions, please visit:

www.visiteastbourne.com/whats-on



You can also consult a member of our Welcome Team on the seafront, visit the seafront office by The Bandstand, or drop into the Welcome Building for information about what's going on.

Art for Everyone - Free!

12/13/14/15th June 11-4 pm

Free Exhibition and sale of work by popular local artists in aid of Friends of Eastbourne Seafront.
Lansdowne Hotel, King Edward's Parade, BN21 4EE



MAY Seafront Events

- 3 - 5 • Magnificent Motors, Western Lawns.
- 9 - 18 • Spring Water Festival, various seafront venues.
- 16 - 18 • Beer & Cider by the Sea, Western Lawns.
- 22 - 1 June • John Searle Funfair, Princes Park.
- 24 • Eastbourne Carnival, Eastbourne Seafront and Princes Park.

JUNE Seafront Events

- 8 • Eastbourne Triathlon Festival, Western Lawns.
- 12 - 15 • 11-4pm, Art for Everyone - Free Exhibition, Lansdowne Hotel.
- 21 - 28 • Rothesay International Tennis, Devonshire Park.
- 21 - 6 July • John Davis' Funfair, Princes Park.
- 22 • Eastbourne 10K, King Edward's Parade.
- 28 • Eastbourne and District Armed Forces Day, Five Acres Field.

JULY Seafront Events

- 12 • Emergency Services Display, Western Lawns.
- 12 - 13 • Beach Life Music Festival and Emergency Services Event, Bandstand
- 19 • Eastbourne Pride, Eastbourne Seafront and Princes Park.
- 20 • TriBourne Festival of Endurance, Western Lawns.

AUGUST Seafront Events

- 8 - 13 • Circus, Princes Park.
- 10 • Beachy Head World Championship Penny Farthing Climb TT, Western Lawns.
- 14 - 17 • Airbourne, Eastbourne Seafront.

SEPTEMBER Seafront Events

- 6 - 7 • Steampunk, Eastbourne Seafront.
- 7 • MG South Downs Run, Western Lawns.

OCTOBER Seafront Events

- 4 • Bonfire Society Procession and Fireworks, Eastbourne Seafront.
- 25 - 26 • Beachy Head Marathon, Beachy Head

Please be aware that the events listed were correct at the time of printing.

Entertainment



Eastbourne Bandstand

The Bandstand claims to be the busiest bandstand on planet Earth! From Easter to the end of October there is a varied programme of entertainment. There are tribute act concerts on some Thursdays, and most Friday, Saturday and Sunday evenings, on some Sunday afternoons there are silver or brass band concerts, some Tuesday evenings have a kids disco party and the famous 1812 Fireworks and prom concerts is on every fortnight from 11th June - 3rd September.



www.eastbournebandstand.co.uk

The Bandstand is currently under repair with work due to start on October 2025 to repair and restore shelters on the ground and middle tier in time for the 2026 season.

Eastbourne Theatres

Eastbourne is fortunate to have 5 theatres –

The Congress Theatre and The Devonshire Park Theatre

www.eastbournetheatres.co.uk

The Royal Hippodrome Theatre

www.royalhippodrome.com

Printers Playhouse

www.ppharts.co.uk

Grove Theatre (in the main library)

www.groveeastbourne.com

Cinema

Cineworld in the Beacon centre in town is a multiplex cinema showing the latest releases. The Towner gallery also has a small cinema.

Transport



Dotto Train

An excellent way to travel along the whole of Eastbourne's seafront is on the land train. This Dotto train runs from Sovereign Harbour in the east, via the Pier to Holywell in the west. A one way trip takes about 45 minutes, but you can hop on and off along the way at stops at the Sovereign Centre, Fort Fun, Fisherman's Green and the Wish Tower slopes. A good place to catch the train is outside the pier to go west, or across the road near the Queen's hotel to go east.

Eastbourne Sightseeing Open Top Bus With Commentary

Running from the pier along the seafront, this bus takes you on a trip outside Eastbourne, lasting about 50 minutes. You can hop on and off all day at the stops along the way at Beachy Head for the South Downs National Park, Belle Tout Lighthouse, National Trust's Birling Gap, with National Trust gift shop, cafe and public toilets, the pretty village of East Dean where there is a market on Wednesday, and through Meads village and Eastbourne town centre.

Other buses

Buses in Eastbourne are run by Stagecoach, Brighton and Hove Buses and Cuckmere Buses. You have to go to the town centre to catch most of them. Bus 99 runs to Bexhill and Hastings and can be caught near the pier. Buses 12, 12A and 12X run from the town centre along the coast to Brighton (one of the prettiest bus journeys in the UK). Bus 13 runs on Sundays and more frequently in the summer from Eastbourne pier to Brighton via the Beachy Head scenic route.

Trains

The train station is at the other end of Terminus Road, in the town centre. Trains run frequently from Eastbourne to London, stopping at Lewes, Gatwick and other places. There are trains to Brighton via Lewes; and to Hastings calling at Pevensey Bay, Bexhill and St Leonard's. There are also trains to Ashford in Kent.

Taxis - 01323 720 720 or 01323 726

There is a taxi phone at the entrance to the Pier. The main taxi rank is outside Eastbourne station.

Dogs on the Seafront



Eastbourne is very dog friendly but there are some restrictions on the beaches, especially during the summer. Here are a few guidelines:

Beaches

- The beaches at the Holywell end of the prom are dog friendly all year around and tend to be sandy, softer for dogs paws.
- Between the Wish Tower and The Pier dogs are not allowed on the beaches between 1st May - 30th September.
- Dogs should be kept on a lead when on the beaches east of the pier.
- Dogs are not allowed on the pier at any time.

Cafés

There are plenty of places to eat and drink along the seafront where dogs are welcome:

- The Kiosk (at the foot of the Downs, Foyle Way)
- Holywell Tea Chalet (Holywell). Dogs outside only.
- The Beach Shack (by the RNLI Museum)
- West Rocks Beach Club (by the lifeguard station)
- The Beach Café (east of the Bandstand)
- The Crown and Anchor (east of the pier, over the road)
- Memories by the Sea (Marine Parade)
- Glass House (by the Redoubt)
- Splash Point Café (by the Redoubt)
- The Beach Deck (next to Treasure Island)

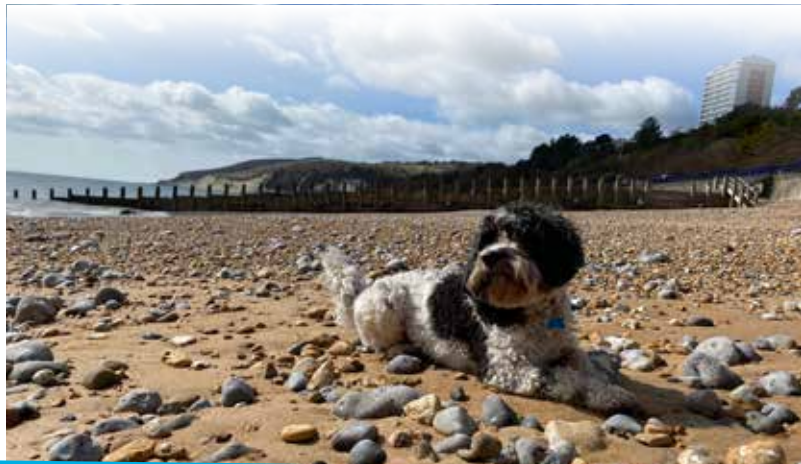
- Perch (in Princes Park)
- Princes Mini Golf Café ((in Princes Park)
- Dogs are allowed on the terrace at Bistro Pierre.

Other places, close to the seafront where dogs are welcome:

Favoloso Café and Downtown Deli (Carlise Road), Kessa Coffee House, Dukes Delicatessen, Sunbean Coffee, Gianni's (all in Victoria Place), The Beach Kitchen (Beach Road, opposite Fisherman's Green) and The Sovereign Harbour Harvester. There are a number of other dog friendly cafés, pubs and eateries in the town centre.

The Beacon

Dogs are welcome in The Beacon Shopping Centre but check with each shop inside as to whether they permit dogs.



Need a toilet?

Community Toilet Scheme



You're
welcome
to use our
facilities

Scan code
to find the
facilities



Eastbourne Community Toilet Scheme

Look for signs like this or
scan this QR code for details



Seafront Facilities Information



Male, Female and Disabled Public Toilets: The Helen Garden, Holywell, The Bandstand (Upper Prom), the Pier (Lower Prom), Fisherman's Green, Princes Park, Harbour Reach, Sovereign Harbour.

Community Toilets: The public may use the toilets free of charge and without a purchase at the Glass House, Sovereign Centre and the Welcome Building. Scan QR code opposite for full list.



Additional Disabled Toilets: The Bandstand (lower prom).

Changing Places Facility: 6 Lower Grand Parade, near the Seafront Office. Specialist equipment for disabled adults and children.

Accessible access: There is a slope to the Lower Prom near The Wish Tower, The Bandstand and The Pier.



Beach Showers: Beach 4 (Holywell), 29 and 30 (by life guards).



Water Refill Stations: Holywell, opposite the Life Guard Station, in the toilets by the Bandstand and Fisherman's Green.



Beach Huts: Available for long term or casual lets. Tel: 01323 410000.



Car Parking: There is car parking along the seafront which is mainly meter paid (Ringo App and a few machines taking cash and cards). Larger council owned car parks are available behind the Congress Centre, at Treasure Island, Fisherman's Green and Fort Fun. There is free parking at Sovereign Harbour. There is no charge for parking along parts of King Edwards Parade from October to April and some all year-round free parking at the Holywell end.



Electric Charging Points: Mount Road, Devonshire Park Hotel, Devonshire Place, NCP Trinity Place, Hyde Gardens, Treasure Island, Asda The Crumbles.

In case of a Seafront Emergency



First Aid Point:

Lifeguard Station near the Wish Tower. If you need emergency services please dial 999 and ask for ambulance, fire service, police or coast guard.



Defibrillators:

- **St Johns (Meads) Bowling Club**
Helen Garden, BN20 7XE
- **Holywell Public Toilets**
(on wall outside toilets), near Holywell Tea Chalet, BN20 7XB
- **Eastbourne Beach Lifeguards**
Lower Grand Parade, BN21 4BY
- **Seafront Team Office**
Bandstand, Lower Grand Parade, BN21 3AD
- **Eastbourne Pier**
(end of pier, RHS 1901 Club), Grand Parade, BN22 7AA
- **All Decked Out**
Seafront shop, lower prom, next to Pier (east side on hut wall)
- **Voluntary Lifeguards Clubhouse**
Royal Parade, BN22 7AA
- **Sovereign Harbour South**
(near water feature, on wall), access path 1
St Kitt's Drive, BN23 5TL
- **Marine Office**
Midway Quay, BN23 5BJ
- **The Waterfront**
(on wall outside Seasons Restaurant),
Sovereign Harbour, BN23 5UZ

Eastbourne Seafront Community Groups



Friends of Eastbourne Seafront: An organisation campaigning, fundraising and working to restore and improve Eastbourne's seafront - www.friendsofeastbourneseafront.org.uk

Meads Community Association: An organisation by and for those who care for the Meads area - www.meadscommunityassociation.org.uk

Friends of Meads Parks and Gardens: A community group that helps maintain, improve, restore, and enhance four parks in the Meads area - www.meadscommunityassociation.org.uk/friends-of-meads-parks-and-gardens

Friends of Princes Park Eastbourne: A community organisation preserving and enhancing the open spaces of Princes Park - www.facebook.com/friendsofprincesparkeb

Celebrating Fisherman's Green - Past, Present and Future:

A community group for all who appreciate Fisherman's Green and wish to preserve it for its historic association with the sea. Join the group on Facebook.

Wish Tower Friends: Encouraging people to visit and appreciate Eastbourne's Martello Tower 73 and Wish Tower Slopes - www.wishtower.org.uk

Plastic Free Eastbourne: Working to make a measurable improvement in the world we are responsible for - www.plasticfreeeastbourne.co.uk

BHASSEXPORE: Aiming to remove plastic and man made debris from our coastal habitat - www.plasticfreeeastbourne.co.uk/bhassexplore

Mucky Mermaids: Regular monthly beach cleans - www.facebook.com/MuckyMermaids

Possability People: Supporting people to live independently (Eastbourne Access Group has now joined this larger organisation) - www.possabilitypeople.org.uk

Eastbourne Eco Action Network: Aims to deliver a carbon neutral Eastbourne by 2030 - www.ecoactioneb.co.uk

Eastbourne Sea Swimmers: Meets between 9am and 10am every Saturday and Sunday on the beach opposite The Langham Hotel.



Our friendly Clubhouse in The Helen Garden is open daily. Serving our seasonal blend coffee, savoury treats, cakes, ice creams, and more.

Stop and play the 18-hole putting course. Try your skills at petanque and bowls. Activities from 13 May - October.

Details at: cadencecycle.club/eastbourne

Also at Beachy Head by the main car park, Litlington, Newhaven Fort, Upwaltham, Cocking Hill & Winchester.

Join our community @cadencecycleclub



THE MARINE

The Marine Pub is situated only 3 minutes walk from the Pier, and offers a warm welcome and comfortable atmosphere.

Excellent quality food and a varied drinks selection served by our friendly staff.

Tel: 01323 720464
www.themarinepub.co.uk

10% OFF ALL FOOD
EXCLUDES DRINKS

A Sauna Experience for the Wild at Heart



Find us near the Wish Tower
www.lunahutsauna.co.uk



Mr Gifts Emporium

226 Terminus Road

'We're much bigger on the inside'



Bay Lodge Guest House

61 Royal Parade, Eastbourne BN22 7AQ

Self-contained, self-catering apartment sleeps up to 4.

3 bed & breakfast rooms: 1 double room,
1 single room & 1 double/superior twin/family

www.baylodge.org.uk

01323 727568 / 07741 243981

baylodgeguesthouse61@gmail.com

numberninetyone

BED AND BREAKFAST

91 Royal Parade, Eastbourne BN22 7AE

*Highly rated, welcoming,
lovely sea views
and delicious breakfast!*

numberninetyone.com

01323 434769



Nascafé

Fishermen's Green,
128 Royal Parade.

Open 7 days a week -
6.30am - 5pm.

A warm welcome and
delicious refreshments.



Set in a tranquil,
sheltered position by the
cliffs & sea with beautiful
views from outdoor &
indoor seating



Come & visit us for:

Tea, Coffee, Cold Drinks, Wine, Beers
Delicious home made cakes, pastries
& freshly prepared food as well as ice creams

Take a Stroll along the Promenade - just 20 -30 minutes from The Pier



www.holywellteachalet.co.uk

Holywell Tea Chalet
The Foreshore, King Edwards Parade
Eastbourne BN20 7XB
Tel: 01323 41022
richard@holywellteachalet.co.uk

the beach deck

GREAT FOOD, GREAT VIEWS, GREAT TIMES

Fabulous breakfasts, delicious coffees, relaxed lunches & heavenly dinners.
Located directly on the beach, offering stunning views from all tables inside and out.

The perfect place to sip your favourite chilled wine or enjoy
one of our spectacular dishes out on the deck.



The Beach Deck, Royal Parade, Eastbourne BN22 7AE
T: 01323 720320 | W: www.thebeachdeck.co.uk | E: info@thebeachdeck.co.uk



Eastbourne Sightseeing

The immensely popular Eastbourne Sightseeing open-top bus tours are back for the 2025 season.

The 15-stop tour offers uninterrupted views of Eastbourne's much-loved seafront, picturesque South Coast hotspots including Birling Gap and Seven Sisters, as well as the renowned South Downs National Park. Perfect for a family day out or for solo explorers.

Get ready to take in the sights with Eastbourne Sightseeing!

Find out more: buses.co.uk/ess



Contactless
payments
accepted

**BRIGHTON
HOVE &**
buses.co.uk

Dotto

Eastbourne's mini train

Returns Spring 2025



The exploring never stops
visit stagecoachbus.com

 Stagecoach

WELCOME



TO THE SUNSHINE COAST



ANCELLS

SUPPORTING FRIENDS OF
EASTBOURNE SEAFRONT

anceLLs.co.uk

01323 738375



THE LANSDOWNE



Always good

Your new dining hotspot in Eastbourne.

 1912eastbourne.co.uk

 [lansdownehotel](https://www.instagram.com/lansdownehotel)

King Edward's Parade, Eastbourne BN21 4EE

01323 725 174

book your table





SEAFRONT RESTAURANT

BRUNCH | LUNCH | DINNER
OPEN 7 DAYS A WEEK

FRESH, LOCAL
SEAFOOD & INGREDIENTS

MON-THURS | 09:00-21:00
FRI-SAT | 09:00-22:00
SUN | 09:00-17:00

  @GLASSHOUSEEB | GLASSHOUSEEASTBOURNE.CO.UK

GLASS HOUSE, ROYAL PARADE, EASTBOURNE, BN22 7AQ




Five modern holiday apartments, a pebble's throw from the beach, and perfectly located on Eastbourne's seafront.



Tel: 07747 472540
www.beachsideeastbourne.co.uk

Eastbourne Walking Tours
with Kim Adams,
an experienced local guide.
To book call: 07941 881212 or visit
www.eastbournewalks.com



Pebble Beach

Holiday Home

Luxury 4 bedroom
holiday home right
on the seafront!

Contact us on
07810 304864 or at
pebblebeach.holidayhome@outlook.com




www.bournetokayak.co.uk



OPEN Weekends - June, July, September
Daily - during School Holidays
Subject to weather conditions

Hello Summer




Lower Promenade
Left of the Pier
Fresh Shellfish
Licensed Bar
Ice Creams & Treats
Independent Business



Front of the Pier
Doughnuts & Churros
Ice creams & Shakes



Live Entertainment Venue
End of the Pier
Ocean Kitchen

 [dropintheoceaneastbourne](https://www.facebook.com/dropintheoceaneastbourne)



BEACH & GIFT SHOP

We are a family run business,
trading for 29 years on
Eastbourne seafront.

Selling a wide range of gifts,
souvenirs, Eastbourne magnets,
beach goods, sun hats, sun cream,
buckets and spades, beach shoes,
inflatables, confectionery, fudge
boxes, rock and much more.



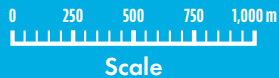
1a Lower Parade, Grand Parade, BN21 3AD ~ East of the Pier
Facebook ~ Beach & Gift Shop • Beachshop@hotmail.co.uk • 07966392836



Seafront Luxury Guesthouse in Eastbourne
Bed and Breakfast Accommodation

Tel: 01323 736 988
Email: bookings@thenewengland.uk





Eastbourne Seafront



Town Centre

Volunteer and make a difference to our seafront

Welcome Team

Our volunteer Welcome Team are on the seafront between The Pier and Bandstand from Easter to October. They welcome, give information, chat and signpost visitors and locals. Training and support is given, and the uniform, a smart turquoise jacket and polo shirt is provided. We ask for a minimum commitment of two hours per week. Make friends, spend a few hours outside and learn about the seafront! Suitable for all abilities and ages over 18 years.



Gardening Team

Our volunteer Gardening Team regularly look after the flower beds and borders along the seafront, including the Bandstand, RNLI flower beds, the Western Lawns borders, the children's cycle track, the Splash Point boat and will start on the World's garden opposite Gelato Famoso this year.



They work as a team all year round, on a weekly basis, to weed, plant and maintain the flower beds and borders. This compliments the work of the Council's contractors and does not replace them. Tools are supplied, but it is suggested you bring gardening gloves.



Events and Fundraising Team

We plan and organise various events to raise awareness and funds for Friends of Eastbourne Seafront. Our events have included seafront tombola and raffles, a Santa Paws Grotto and a fashion show. If you have great ideas and can organise or help organise events or have a fundraising background please get in touch.



All funds are used to improve the seafront.
For all volunteer opportunities please contact:
gaynor@friendsofearthseafont.org.uk



DONATE!



All funds are used to improve the seafront.

Donations via Paypal - use the QR code to take you to the Paypal or search for us through the app.

Donations via Bank Transfer -

Friends of Eastbourne Seafront Ltd
Sort Code 23-05-80, Account No. 44913585

Donations via Cheque - made payable to Friends of Eastbourne Seafront Ltd - send to 91 Royal Parade, Eastbourne, BN22 7AE

JOIN US!



For more information on how to join visit:

www.friendsofeastbourneseafront.org.uk

f Follow us on facebook for the latest news

To advertise in future copies of this booklet email:

gaynor@friendsofeastbourneseafront.org.uk

Booklet design by: amandaripleydesign.co.uk

Sustainable printing on recyclable materials.

GRAPHIC DESIGN BESIDE THE SEASIDE
LOGOS, FLYERS, LEAFLETS, POSTCARDS,
BROCHURES, BANNERS, ADVERTS



www.amandaripleydesign.co.uk

